



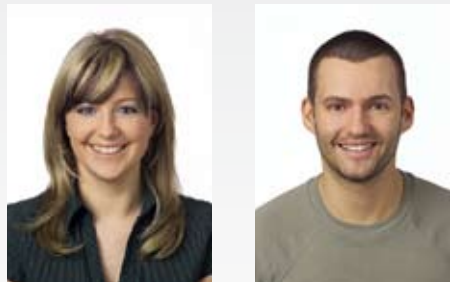
MOBIL ID

MOBILE ENROLMENT UNIT FOR SECURE IDENTIFICATION CREDENTIALS

The Multicard MOBIL ID combines all of the components necessary to capture data, portraits and biometrics for ID and passport programs. The system can be configured to your specifications and is best suited for situations where going to the applicant makes the most sense due to a remote location or to save employees time. The MOBIL ID allows you to capture an applicants personal data, portrait, signature and fingerprint(s) that are biometrically compliant and to international specifications.

- MC 5000 digital camera/ MC 8000 CCD video camera
- Fingerprint scanner
- Signature pad
- RFID reader / encoder / e-passport
- Laptop
- Multicard ID Management and Execution Software

The MOBIL ID is portable and is suitable as carry on luggage on your business travels. The MOBIL ID can be set up and is ready for use in minutes - simply open the modern case, insert the camera support, plug in the power supply and the capture system is ready for use.



Brilliant pictures

To international specifications in any environment ICAO/ ISO and FIPS 201 compliant



MC 9000

MC 9000 Photo Studio (optional)

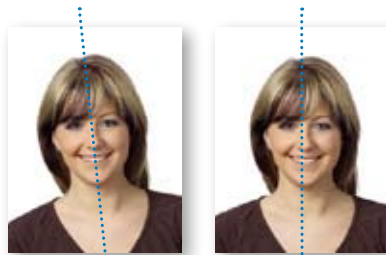
MC 9000 photo studio, guarantees perfect and shadow free pictures to ICAO/ISO specifications.

The photo studio was designed to give consistently good portraits, even in changing light environments using synchronized flashes.

Face Finding (optional)

A special feature is automatic face finding. The face is centered, sized and positioned automatically.

We guarantee a constant image quality!



The result is portraits with perfect color and size to ICAO/ISO specifications for electronic passport/ID programs.

Product Benefits

- Portable
- Flexible capture station for taking personal data as well as portrait, fingerprint and signature
- Choice of case components
- Sound assembly of all components
- Fast and easy set up
- Lockable case
- Durable construction

All captured data are saved locally on the notebook and can be transferred via network, wireless LAN or removable medium to your central database.

If you prefer to print and encode your ID cards immediately after data capture, simply add your ID card printer to the MOBIL ID capture system - the RFID encoder is already included and there are built in USB ports.

MOBIL ID- easy set up and simple to operate.

Technical Data

MOBIL ID - Mobile Enrolment

ABS Hard Top Case

- Multi-layer ABS / PMMA moulded case with aluminium frame
- High quality thermoformed composite inserts
- Extreme Impact and scratch-resistant
- Operating temperature -20 to +80° C
- Metallic silver color
- Chromed hinges
- Storage compartment in removable cover
- Dimensions: L 610, W 420, H 135 mm
- Total weight: 12,5 kg (including Notebook)

Equipment (standard configuration)

- MC 5000 / MC 8000 high resolution auto-focus color camera.
- Signature Pad with illuminated LCD Display
- DELL Notebook or equal
- Optical fingerprint scanner 500 dpi
- Four USB ports
- RFID Coding Module for LEGIC and Mifare

ID- Software

- Simple user interface with all integrate modules
 - image acquisition
 - signatures and fingerprint/ coding
- Password protected
- Local database/ data file
- Task for export with data saving

